



## ST NICHOLAS CHRISTMAS FAIR

Saturday 5<sup>th</sup> December

2pm – 4pm in the Community Hall

Put the date in your diary and come along, bring your family and friends. Entrance £1 for adults – including a glass of mulled wine.

- **Santa's grotto**
- **Home produce**
- **Christmas cake & pudding raffle**
- **Book stall**
- **Children's crafts & tombola**
- **Home made gifts**
- **Hamper tombola**
- **Teas & cakes**
- **Mulled wine**
- **Grand Draw**
- **Cake stall**
- **Local gift & craft stalls**

We would be grateful if you could help by donating any of the following:

Bottles of wine  
Packaged foods and drink for hampers  
Chutneys, jams, mincemeat, mince pies, cakes etc  
'Good as New' books  
Raffle prizes

We are also looking for wicker baskets to use on the hamper stall, also any offers of help on the day would be gratefully received.

For more information or collection of donations please ring:

Christian Dryden 01264 720398 or  
Andrea Hulme 01264 720347

### Anorak found

A child size blue anorak was found after the Fête and has not been claimed. If the owner does not contact Patrick Beresford, tel. 01264 720421 by 4<sup>th</sup> December he proposes taking it to the St Nicholas Christmas Fair on 5<sup>th</sup> December.



### LONGPARISH GARDENING CLUB

December 2009 - No meeting

January 26<sup>th</sup> 2010 - Ray Broughton will talk on  
Topical Tips and New Ideas.



## NEWS FROM TESTBOURNE

### MEMORABLE MITYANA VISIT

Since our last news I have had the privilege of joining our Testbourne Team Uganda 2009 on a visit to Mityana and our partner school. This was a wonderful experience for us all at many levels: experiencing the rich culture of another country at first hand, including their super music and dance; joining in with actual lessons and squeezing a few more into classes already containing 60 or 70 students; spending time with their "buddies"; finding out about their lives and even visiting some of their homes; joining with them at a joyful Sunday morning service and witnessing the strength of the faith which they clearly hold dear and which sustains their daily lives.

Our young students rose superbly to the challenge of leaving their families and coping with very different conditions far away from home. They tucked into "poshu and beans" for school lunch; struggled up hill with a heavy jerry can of water; learnt some Lugandan; spoke and sang in public and coped with quite a lot of physical discomfort.

There were also experiences which caused us all to count our many blessings: a tour of the cramped dormitories; a visit to the under-resourced Maternity Unit in the local hospital to deliver blankets; an upsetting afternoon at the Orphanage where so many children had lost parents and family to HIV and Aids

We learnt and shared so much – including on our final few days safari to Murchison Falls, getting close up to giraffes, elephants and the lions and seeing chimps in the wild.

Our thanks go to Rev. Dodie Marsden for making all of this possible.

### TESTBOURNE CHOIR AT THE ALBERT HALL

Testbourne pupils also did themselves proud when those in our Bella Voce Choir appeared in the Schools Prom at the Albert Hall as part of the Hampshire Massed Choir. They performed The Darwin Dilemma, a specially commissioned piece to mark the bicentenary of Darwin's birth. It was a tremendous evening – with superb music – and moving to see our pupils performing so well in such a fabulous venue. The Testbourne spectators were pretty impressive too!

### INSPIRATION FOR YEAR 11 ACHIEVERS

It was also a pleasure to welcome back our 2009 Year 11 group to celebrate their record-breaking examination results at the annual Presentation Evening. Our guest speaker this year was Rhys Jones. Rhys is a local boy and an "adventurer", who at the tender age of 23 has already climbed the highest peak on each of the seven continents, including reaching the summit of Mount Everest on his 20<sup>th</sup> birthday. He gave a captivating account of his many adventures, including the challenge of peeing in temperatures of -40°C! It was a real inspiration to our ex-students (and adults too) as to what you can achieve in life when you really set your mind to it.

Hilary Jackson Headteacher

## Longparish Community Association

### Renew your LCA membership for 2010 now!

An annual subscription of the Longparish Community Association costs £1 per individual. If you were a member in 2009 don't forget to renew it in the next few weeks, using the form at the back of the events calendar or download one from [www.longparish.org.uk](http://www.longparish.org.uk) If you haven't joined do it NOW!! The benefits of membership include priority booking and discounts for LCA organised events and the use of some of the Association's equipment listed on the website. Your membership will also ensure that the activities of KidzZone and the Recycled Teenagers continue to run.

### LCA - L2SOTM - The Longparish Second Sunday of the Month handicap race

Another grey day, including some rain on the way round, made it good for the runners but not so fun for the helpers and spectators at the November race. We were pleased to welcome new runners Jabez, Neil and Brian to the field and, despite the poor weather and early start, had a good turnout.

The early start was because it was Remembrance Day so it was entirely fitting that our most improved woman was Katie King who recently returned from service in Helmand with the TA. Most improved man was Jeffery Wiseman, a much deserved award as he is one of our most regular competitors.



Thanks go to Jack, Maggie and Graham for marshalling, cake making and timekeeping, to the Goulds for the signs and to the Cricket Club for the lovely venue.

The next race is on Sunday 13 December starting at the usual time of 10am at the Cricket Ground. This is our Christmas run so we'll be having mince pies and mulled wine afterwards. Runners of all standards are welcome as are brisk walkers. It is a handicap race so the slowest have as much chance of winning the cups as the fastest. Supporters of all ages are very welcome.



will meet between 7pm and 9pm in the Village Hall on 2<sup>nd</sup> and 16<sup>th</sup> December.

Due to other commitments Martin and I will not be able to run Kidz Zone from the New Year. It's been three and a half years since we helped set up the club and it's time someone with fresh ideas took over to keep the club vibrant. So we are looking for someone to take over - setting up an adult helpers rota, helping on club nights and stocking the tuck shop. Please contact me if you think this is something you would be interested in doing.

Andrea Hulme 720347

## A message from the Playgroup



All the children, staff and committee from Longparish playgroup, would like to say thank you to all the people involved in organising the pumpkin competition. It was a lovely event and the children really enjoyed making the playgroup entry in the decorated category.

### LCA - The Great Longparish Santa Dash

Come and run off the Christmas pudding in the Longparish Santa Dash on Boxing Day. Assemble at the Shop at 11.15 am where the best dressed and most glamorous Santas will be judged followed by a dash to The Plough starting at 11.20.



Please put on a Santa outfit (available from The Range for under a fiver) or just come and support or cheer along the route. The pub will be open at 11.30 for Santas and supporters to satisfy their thirst. Last year we had about 25 Santas and lots of spectators. Let's make it more this time!



### LCA The Marvellous Magic Coat

#### Postponed to Sunday 7 Feb

We very much regret that we had to postpone the performance of this children's show scheduled for Sunday 22 November because of illness. Tickets remain valid for the new date which is Sunday 7 February at 3pm in the Longparish Village Hall.



### L.C.A

#### Morning Coffee

Gina is hosting the monthly coffee and chat at Orchards, Southside Road. Do come along between 11.00 and 12.30 on Friday 18th December. You are assured of a warm welcome. If you need a lift give Gloria a call on 720425 and she will arrange one for you.

### Recycled Teenagers

Next meeting is on Monday 14<sup>th</sup> December at 2pm at the Community Hall for the dress rehearsal of the school Christmas production, "Rock around the Flock", with tea afterwards in the Village Hall. Corinne Bowman 720643

A DATE FOR YOUR 2010 DIARIES!

HOG the LIMELIGHT EVENT  
PHILEAS P. SOUPER

A much acclaimed musical show for all ages

**Saturday 30<sup>th</sup> January at 7.00pm**  
**at Longparish**  
**Village Hall.**



*Five zany musicians and two miming clown artistes travel hysterically, beautifully, and magically around the world almost literally in around 80 action packed minutes. From a tandem bike through Paris to a late train in Siberia, they travel the world showing off their madcap comical observations as they go. Come and see them play*

*marimbas, mbiras, saw, piano, peanut tins and zither, not to mention singing, accordion, bassoon, banjo, brass, percussion, drums, guitar, tuned wine glasses, and washboards.*

Tickets on sale in December.

FROM CHRISTIAN DRYDEN TEL 720398

earned the award for his performances for the County side over the past season and was presented with the trophy at a recent ceremony at The Rose Bowl.



Billy Mead

Congratulations also to Scott Sturt on his selection for the Winchester and District U10 squad that will train over the winter and compete in the District Festivals next season. Fingers crossed for all others awaiting the results of district trials.

On Tuesday 15<sup>th</sup> December the Club are holding a Christmas draw in The Cricketers Inn, Longparish. Prizes include: £50, A meal for two at The Cricketers, Voucher for Newlyn Farm Shop, Smoked Trout, Hildon water, Wines from around the world, Chocolates, Christmas related products and much much more. Tickets are priced at 50p and are being sold over the coming weeks and on the night, see Ray Smith for tickets and details. All proceeds to the Club. The December 10 club draw will be held on the same evening to which all are welcome.

A limited number of calendars are still available, priced at £8 from Rachel de Cani - [racheldecani@googlemail.com](mailto:racheldecani@googlemail.com) or 07759599097. All proceeds to the Club.

#### 100 Club winners

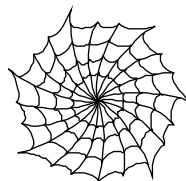
£35 Edward Wills  
£15 M.P. Turner  
£15 John Young

Chris de Cani



### December Haiku

The bare oak sapling  
now wears a string of dew pearls -  
a spider's jewellery.



#### FOLS 100 Club results

##### September

1 <sup>st</sup>	130	Oliver Luckraft
2nd	117	BR & JL Chambers
3rd	28	Mary Jo Darrah

##### October

1st	80	Mr and Mrs Mottley
2nd	30	Mrs J Montague-Dennis
3rd	19	Mrs H Ridge

## Longparish Cricket Club



Sponsored by Barker, Son & Isherwood, Solicitors  
Longparish Cricket Club's indoor season continued at breakneck speed this past month with six of the seven teams in action.

In the Winchester Leagues at Riverside Park the Longparish first team notched their first win of the season; requiring 18 to win from the last over Longparish won with 3 balls to spare, thanks to some big hitting from Barry Blackmore. Longparish II beat Bishops Waltham. After scoring 167 for 4 they dismissed Bishops Waltham for 87 to register their first win of the season. Warren Bonathan's Longparish III side remains unbeaten after an emphatic win over Bishops Waltham II. Restricting Waltham to 133 for 3 they passed the target with overs and wickets to spare.

In the Dummer Leagues both Longparish teams had a successful month. Justin Jackman's Longparish Lightweights lie mid table in Division 1 after wins over Overton and Plaza Panthers and a heavy defeat to Yately, while 3 successive victories for Paul Blackmore's Longparish Longhops make them early contenders for promotion from Division 2.

The U16s suffered a rare defeat in a tight game at Winchester against Southampton Community when they were dismissed 15 runs short of the target with overs to spare. Details of Indoor fixtures and results can all be found on [www.longparishcc.co.uk](http://www.longparishcc.co.uk)

Congratulations to Longparish U11 captain Billy Mead on being named Hampshire's U10 batsman of the year. Billy

### YOUR PARISH NEEDS YOU

We have a vacancy on the Parish Council

- If you can spare some time to help with the council's work please join the council
- If you think 'they' should be doing things differently or like what 'they' are doing already please join the council
- If you want to improve our village please join the council



To find out more about what the council does and what being a councillor involves please contact the chairman, Jeremy Barber, email [jeremy.barber@longparish.org.uk](mailto:jeremy.barber@longparish.org.uk) tel 720459, or ask any councillor.

## Longparish Parish Council

This report covers the November meeting. The minutes are on the village website [www.longparish.org.uk](http://www.longparish.org.uk).

### Jo Clear

Councillors thanked Jo for her for her valuable contributions during over 8 years of service and toasted her happy retirement.

### Vacancies

Karen-Marie Dinesen was co-opted to join the council. Thank you, Karen-Marie, for volunteering. The further vacancy resulting from Jo Clear's retirement will be advertised

### Planning

The Council had no objection

- A garden room at Tudor Cottage;
- Retention of two relocatable hay stores at Owls Lodge Farm;
- Engineering works to change watercress beds to a carp rearing pond at Vale Farm.

### Fire at Waste Transfer Station

The Council was concerned at the recent large fire at the waste transfer station on the Harewood Forest Industrial Estate and will discuss the matter further at the December meeting.

### Open Spaces

#### Maintenance contracts

The Council invites quotes for maintenance of our open spaces every three years. Existing contractors will be contacted individually. If you are interested in quoting please contact the Chairman, Jeremy Barber, who will issue a detailed description of the jobs:

- Maintaining the cemetery
- Cutting the grass in the village hall car park
- Cutting the grass in the playground
- Cutting the football field
- Cutting the village green twice a year

### Clean Up day

Thanks very much to everyone who supported the village clean up day and to Raymond Brown for providing the skip. A great deal of work was done,



particularly on clearing the stream so it drains freely for the winter, and on clearing the leaves from the school to car park footway.

### Whitchurch HSBC Bank closure

The Council decided to support the campaign to keep the bank.

### Pumping of Sewage into the river

The Council supports St Mary Bourne Council in urging Southern Water to devise a long term solution to the problems of ground water leaking into the sewer instead of their current proposal to spend around £1million on infrastructure to enable them to pump raw sewage into the river.

### Footpaths

In the light of experience of use of the recently fenced part of footpath 11, the Council has asked Mr Woodhouse to level out the uneven surface by raising it to the height of the old causeway.

### Roads

The HCC Highways engineer has undertaken to repair potholes in the passing place on Southside Hill, at the junction of Southside Road and Nuns Walk and near the entrance to Middleton House. It is always helpful if parishioners report defects such as potholes and blocked gullies. You can do so using the online form at

<http://www3.hants.gov.uk/roads/online-facilities/all-forms.htm>

The HCC engineer was concerned at some hedges encroaching onto the Highway and the Council will contact the owners.

### Communication

The Council decided to continue financial support for Hill & Valley which enables a copy to be issued free to all the households in the parish.

### Next Parish Council Meeting

The next parish council meeting is on Monday 14 December. Meetings are public. Parishioners are welcome to come and can speak by invitation. Jeremy Barber Chairman. Tel 720459

**Obituary**  
**Henry Mead**  
**1939 - 2009**

Henry Walter Charles Mead of North Acre, Longparish died in the Countess of Brecknock Hospice, Andover on 20 October 2009 aged 70. His funeral was held at Salisbury Crematorium on October 30<sup>th</sup>.

He was born in Whitchurch and had one sister, Mary, who survives him. After school there he went to work at The International Stores in Overton. He did his National Service in the Signals Regiment and followed it with work at Kennedy's, BOC, Taskers and finally Stannah.

He met his future wife, Sheila, when they were both very young and that was the great relationship in his life.. When courting he would cycle from Whitchurch to Hungerford. They were married in Houghton in 1963 and came to live on North Acre in 1974. It was a good relationship and they complemented each other, having very different attitudes and tastes. He liked staying at home while Sheila would urge him to go out. He was quiet and private while Sheila liked to talk with everyone. He felt his life had been greatly diminished by her death. Henry leaves a son and daughter, Steven & Sue, five grandchildren and a great-grandson.

Henry was a private and dignified man, an independent and sometimes apparently a solitary person. He liked his own company yet was always friendly and spoke to many especially when out on his walks. He was a person of routine, as seen for example in his walks along the same route, his being at the shop at 8am waiting for the doors to open and his eating habits. He was an economical person, not given to extravagance or waste and equally not a demonstrative person. He was a solid worker but he mused whether he had passed up a good chance when he had been invited to run a sugar plantation after his national service and he also had the opportunity to emigrate to Canada but as usual he was cautious and remained where he knew. He faced his final illness with courage and was grateful for the care and nursing of the staff at the Countess of Brecknock Hospice, Andover.

Terry Hemming

**SPRUCING up ST NICHOLAS CHURCH  
 for CHRISTMAS**

Can you spare an hour on  
**MONDAY 7th DECEMBER**  
 Between 10.00am – 12.00 noon  
 to help clean the church ready for all the  
 Christmas Festivities?  
 Coffee and mince pies included!  
 Tel Christian Dryden Tel 720 398

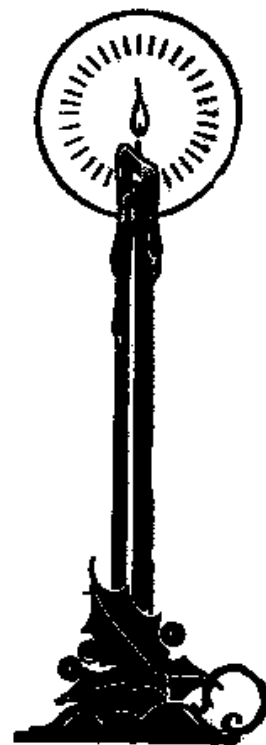
**CAROLS BY CANDLE-  
 LIGHT**

**Sunday 20<sup>th</sup> Dec**  
**6.30pm**  
**at St Nicholas Church**

With the Longparish  
 Choir  
 followed by  
 Mulled Wine and Mince  
 Pies

\*\*\*\*\*

Get into the Festive  
 Spirit!  
 Join the choir for carol  
 singing at  
 the village pubs:



**The Cricketers Sunday 13<sup>th</sup> Dec 8pm**  
**The Plough Monday 21<sup>st</sup> Dec 8pm**

\*\*\*\*\*

**Other Christmas services at St  
 Nicholas**

**Nativity Service**  
 9.30am Sunday 20<sup>th</sup> Dec  
**Christingle**  
 5pm Christmas Eve  
**Candlelit Midnight Mass**  
 11.30pm Christmas Eve  
**Christmas Family Communion**  
 11am Christmas Day

**Miss Glossop's Weekend Break**

The Longparish players go from strength to strength, with each production excelling its predecessors. Miss Glossop's Weekend Break by Stuart Arden, a farce with murderous overtones, was an admirable vehicle for their talents. All the action took place in the reception area of a small hotel in the late 1920s. There was nothing flimsy about the reception desk and cupboard created by the set-builders, which was just as well, as the sight of Linda (Andrea Hulme) upended over the former ("Lovely views!") was in the best traditions of farce.

Andy Smith, playing Alan Kennett with his usual easy stage presence, was in the centre of the action in the first act as an hotelier with a penchant for the ladies. His wife, (Andrea Harris) fetching in red, departed early on in a huff to visit her mother, leaving him to cope with the unwelcome arrival of Miss Glossop, the incompetent amateur detective, played with telling restraint and more than a nod to Miss Marple by Sandra Jones, who gently caressed her fox fur. Another unwelcome arrival was an ex-mistress, Linda, with her current lover, "Mr Smith". Alan's hopes of enjoying the charms of Sonia, an attractive & flirtatious Russian waitress, (Kathryn Drinkwater on Friday night and Jo Webb on the others) were dashed by constant interruptions, and terminated by his falling from the cupboard as a bloody corpse at the beginning of the second act.



Other hotel staff were the temperamental French chef, (Jeremy Barber) who was the initial suspect, and the maid, Carol Dunford, immaculately dressed, an amusingly silent and scornful witness to the action. Martin Hulme doubled as the crusty Major Trevarthen and the dim

Constable Dibble, who gleefully seized each suspect and reluctantly released them. There was an excess of detectives. Jonathan Frere made an confident debut as "Mr Smith", a private detective masquerading as a guest, exchanging barbed put-downs with Paul Costelloe as Detective-Sergeant Roy Watkins. The versatile Toby Cooper made a surprisingly convincing Mrs Jarvis ("I was in the circus you know") finding a plummy female voice to match his fetching garb. The cast paid tribute to all those who had helped with the production and especially to their director, Phil Holder (in armchair in the cast picture) for his expert guidance, which resulted in a most enjoyable evening.



Photos by Martin Lampard

More photos of the play by Martin Lampard can be found on <http://www.longparish.org.uk/players/index.php>

## BIRDS OF LONGPARISH

### THE MUTE SWAN

Everyone can recognise the swan which is one of the largest flying birds. The male is slightly larger than the female. Both are white with orange/red bill. The male



Photo © chris bowman

has a larger black nob on the forehead and a slightly thicker neck. The male is called a cob, the female a pen and the young are called cygnets. Swans usually pair for life. In March to April they build a big nest and lay up to eight eggs, which are mainly incubated by the pen for 34 to 38 days. The cygnets leave the nest almost straight away and are looked after by both parents. It takes 4-5 months before they can fly.

Our local swans around the Cleeves hatched eight eggs this year, some time later they chased one of them away for some reason, but it is still okay. They still have the remaining seven with them.



Photo M.J.Darrah

A sparrow hawk flew into our conservatory window leaving a near perfect print on the glass which can be seen on my web site [www.chrisbowman.co.uk](http://www.chrisbowman.co.uk)

chris bowman